

7003

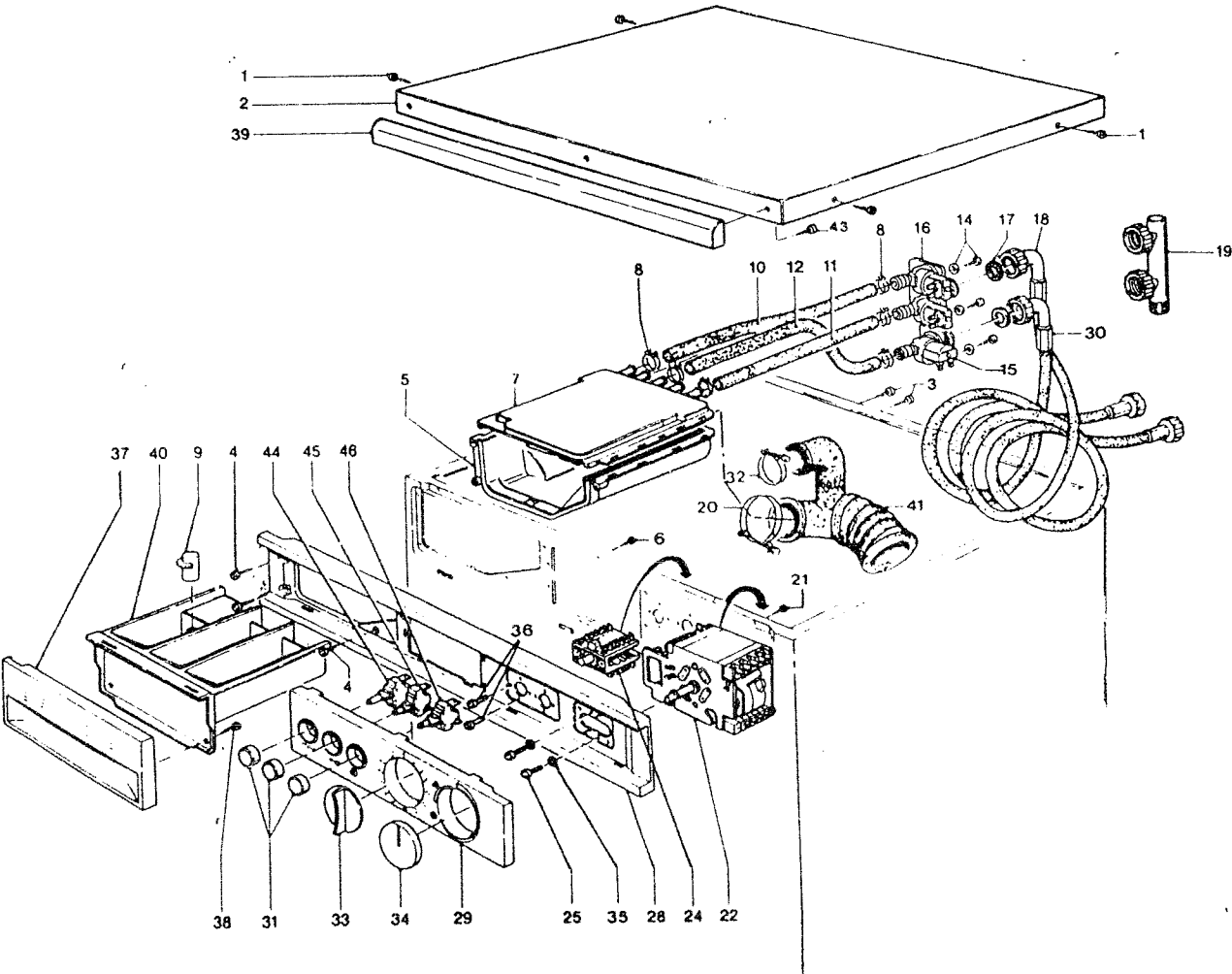
7003/1

7133

7133/1

CONTROLS GROUP

Ref HL/C8



WASHERS USE HL/C8 21/4/87

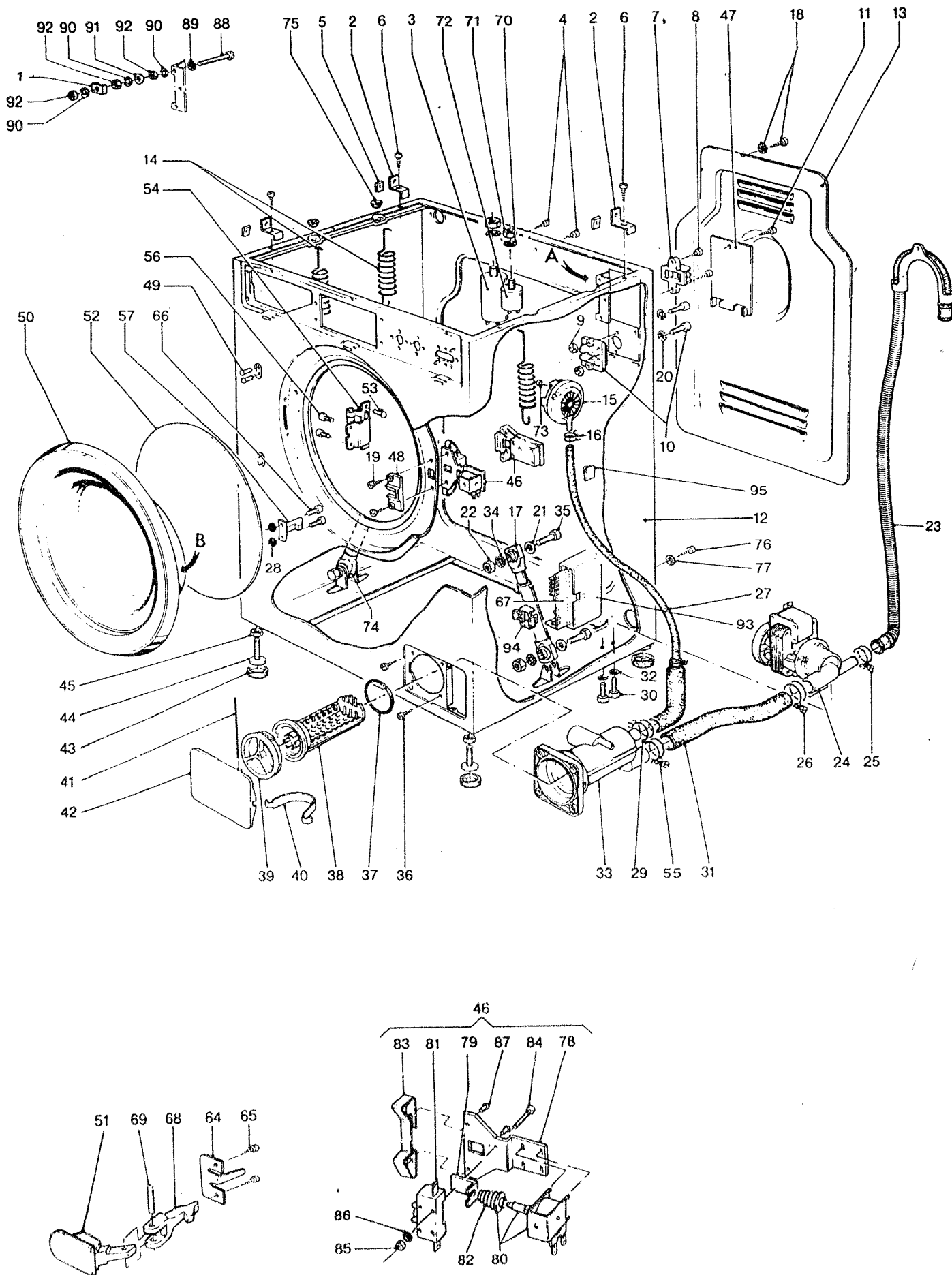
IT	DESCRIPTION	7003	7003/1	7133	7133/1
---	-----	-----	-----	-----	-----
	CONTROLS GROUP				

*	BLOCK PANEL TOP (NEW) FIXING	483185	483185	483185	483185
	BRAILLE FASCIA SET	473207	473207	473207	473207
	BRKT TRANSIT ANGLED (INT)	535914	535914	535914	535914
	BRKT TRANSIT FLAT (EXT)	535902	535902	535902	535902
	CATCH, SOAP DISP. DRAWER	455748	455748	455748	455748
	COVER, BLEACH DISPENSER	485042	485042	485042	485042
	FRAME, CONTROL PANEL (6/85)	-	533851	-	533851
	INDICATOR, NEON	482076	482076	482076	482076
	LOCKWASHER M4 S/-	997980	997980	997980	997980
	LOCKWASHER M4, TOP & BLOCK FXG	997980	997980	997980	997980
	NUT FOR SW SUPPT. PLT. M3 S/JU	380149	380149	380149	380149
	NUT, HALF M4 B/-	993817	993817	993817	993817
	PANEL TOP (NEW) DRLD. FOR STK. KITS	483173	483173	483173	483173
	PLATE, SWITCH SUPP. (TO BE MOVED TO NEW CABINET IF REQUIRED)	455360	455360	455360	455360
	PLUG BLANKING	514489	514489	514489	514489
	SCR CH HD M4X18 B/-	357518	357518	357518	357518
	SCR FOR SHIPPING STRAP	991455	991455	991455	991455
	SCR PAN REC HD AB NO. 8X13 S/JU	392893	392893	392893	392893
	SCR PAN REC HD AB NO. 6X4.5 S/W	470580	470580	470580	470580
	SCR PIN SW SUPPT. PLT. M3X8 S/JU	380187	380187	380187	380187
	SCR TOP & BLOCK FXG (NEW PANEL)	363385	363385	363385	363385
	SCREEN SPRAY	465339	465339	465339	465339
	STRAP SHIPPING (LATER PRODUCTION)	531205	531205	531205	531205
	STRAP, SHIPPING	999562	999562	999562	999562
	STRAP, VERT. REINFORCEMENT	455413	455413	455413	455413
	TAG, EARTHING (TOP PANEL)	362965	362965	362965	362965
	WASHER PLAIN FOR SHIPPING STRAP	395962	395962	395962	395962
	WASHER S/P FOR SHIPPING STRAP	999548	999548	999548	999548
	WASHER, SPRING M4 S/- TEN PK	990205	990205	990205	990205
01	SCR PAN REC HD AB NO. 3.9X13 S/O	465341	465341	465341	465341
02	PANEL, TOP	455487	455487	455487	455487
03	SCREW, 4.2X9.5	516619	516619	516619	516619
04	SCR MUSH REC HD NO. 6X16 S/JU	467325	467325	467325	467325
05	BODY, SOAP DISPENSER	455724	455724	455724	455724
06	SCREW, 2.9X6.5	465315	465315	465315	465315
07	COVER, SOAP DISPENSER	455736	455736	455736	455736
08	CLAMP, 16MM	991534	991534	991534	991534
09	BELL HOUSING TO SYPHON	455750	455750	455750	455750
10	HOSE, VALVES TO DISPENSER	516164	516164	455815	455815
10A	HOSE, ADDITIVE 9/84	-	537833	-	537833
11	HOSE, MAIN WASH 9/84	-	537857	-	537857
12	HOSE, PRE-WASH 9/84	-	537845	-	537845
14	SCR HEX HD AB NO. 8X9.5 S/JU	994275	994275	994275	994275
14A	LOCKWASHER M4 S/-	997980	997980	997980	997980
15	VALVE, SOLENOID, SINGLE	538021	538021	538021	538021
16	VALVE, SOLENOID, DOUBLE	465274	465274	465274	465274
16A	RESTRICTOR BLUE 1.1L FLOW	576152	576152	576152	576152
17	WASHER, HOSE UNION	991546	991546	991546	991546
18	HOSE, INLET, COLD	481979	481979	481979	481979
19	CONNECTOR F, (OPTIONAL)	998075	998075	998075	998075
19A	CONNECTOR Y, (OPTIONAL)	479598	479598	479598	479598
20	CLIP, HOSE 51MM	455774	455774	455774	455774
21	SCREW, 2.9X6.5	516396	516396	516396	516396
22	TIMER 240V EBT9607.02D	465391	-	465391	-

WASHERS USE HL/CB 21/4/87

IT	DESCRIPTION	7003	7003/1	7133	7133/1
---	-----	-----	-----	-----	-----
	TIMER 900/914/650 (2492/10)	-	558368	-	558368
25	SCR CSK REC HD NO.2X4.5 S/W SCR M5X6, TIMER FIX (CROUZET)	447789 -	447789 538007	447789 -	447789 538007
28	FRAME,CONTROL PANEL	516009	516009	516009	516009
29	PANEL, FASCIA	465224	537869	465224	537869
30	HOSE,INLET,HOT	487325	487325	487325	487325
31	CAP,PUSH BUTTON	452758	452758	452758	452758
32	CLAMP, 35MM	990724	990724	990724	990724
33	KNOB ASSY	452760	452760	452760	452760
35	WASHER	346961	346961	346961	346961
36	SCR PAN REC HD M4X8 S/JU SCREW, M4X5 CH.HD	991778 567008	991778 567008	991778 567008	991778 567008
37	PANEL,FRONT,SOAP DISPENSER	452746	452746	452746	452746
38	SCR CSK REC HD AB NO.8X9.5 S/JU	470592	470592	470592	470592
39	STRIP,LOGO, TOP PANEL	487313	487313	489995	489995
40	DRAWER,SOAP DISPENSER SCR 3.5X22(WITH 166.9 OF DRAWER)	455712 516554	455712 516554	455712 516554	455712 516554
41	HOSE SOAP DISP-TO-TUB (24.9.84) HOSE,SOAP DISP./TUB	531683 490669	531683 490669	531683 490669	531683 490669
43	SCR MUSH REC HD AB NO.10X13 S/JU	362991	362991	362991	362991
44	SWITCH,2 POLE(ON/OFF)	456467	456467	456467	456467
45	SWITCH,2 POLE	452722	452722	452722	452722

7003, 7003/1, 7133, 7133/1



WASHERS USE HL/CDB 21/4/87

IT	DESCRIPTION	7003	7003/1	7133	7133/1
---	-----	-----	-----	-----	-----
	CABINET & DOORS GROUP				

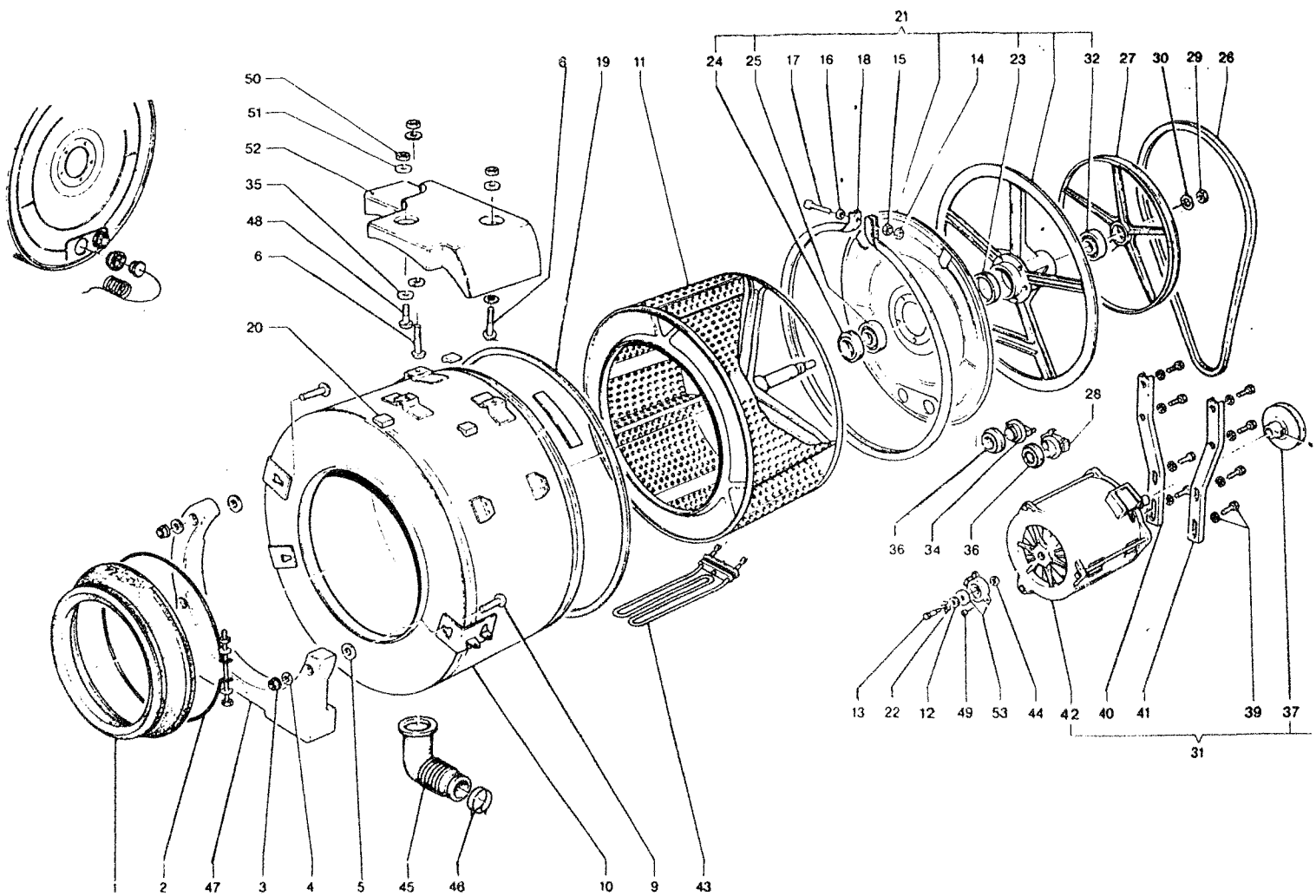
*	BRACKET PRESSURE SW.MTG.	455451	455451	455451	455451
	BRACKET,CAPACITOR MTNG.	455449	455449	455449	455449
	CLAMP,DIAPHRAGM RET.(DELETED 9/84)	989880	989880	989880	989880
	FOOT,ADJUSTABLE LARGE	999201	999201	999201	999201
	GASKET -PUMP	990683	990683	990683	990683
	GUIDE EARTH CABLES	531217	531217	531217	531217
	HARNESS WIRING	589408	589393	589408	589393
	HARNESS WIRING (FREQ)	-	562096	-	562096
	LABEL	491845	491845	491869	491869
	MAINS LEAD	465248	465248	465248	465248
	PAD, RUBBER LARGE	999213	999213	999213	999213
	PAD, RUBBER REAR	999225	999225	999225	999225
	PROTECTOR,RFI FILTER & CAPACITOR	482002	482002	482002	482002
	PROTECTOR,VALVE SOLENOID	487363	487363	487363	487363
	SCR 2.9X6.6	-	465315	-	465315
	SCR 4.2X9.5	-	516619	-	516619
	SCR CSK REC HD AB NO.4X9.5 S/W	989830	989830	989830	989830
	SCR.MUSH REC HD B NO.6X11 S/JU	467296	467296	467296	467296
	WASHER M10 SPCL LARGE	999184	999184	999184	999184
	WASHER,S/P M5 S/-	392946	392946	392946	392946
01	WASHER	473116	473116	473116	473116
02	BRACKET, TOP PANEL MTNG.	455499	455499	455499	455499
03	CAPACITOR 20MF	482026	482026	482026	482026
04	SCR.PAN REC HD NO.8X13 S/JU	363385	363385	363385	363385
05	NUT,CAPTIVE 'U'NO.8	989816	989816	989816	989816
06	SCR.PAN REC HD NO.8X13 S/JU	363385	363385	363385	363385
07	TERMINAL BLOCK	481967	481967	481967	481967
08	SCR HEX HD AB NO.8X9.5 S/JU	994275	994275	994275	994275
09	PUSH-ON-FIX	392752	392752	392752	392752
10	CLAMP HARNESS	997813	997813	997813	997813
11	SCR.PAN REC HD AB NO.10X13	467258	467258	467258	467258
12	CABINET ASSY (SUPERSEDED, SEE 12B)	455396	455396	455396	455396
12A	CABINET ASSY 9/84	-	537950	-	537950
12B	CABINET CONVERSION (ETL068)	-	537962	-	537962
13	PANEL BACK	455475	455475	455475	455475
14	SPRING,TUB SUSPENSION	455554	455554	455554	455554
15	SWITCH PRESSURE 2 LEVEL	533679	533679	533679	533679
16	CLAMP-PRESSURE HOSE	991091	991091	991091	991091
17	SHOCK ABSORBER RH LONG	455530	455530	455530	455530
18	SCR.PAN REC HD AB NO.3.9X13 S/D	465341	465341	465341	465341
18A	LOCKWASHER M4 S/-	997980	997980	997980	997980
19	SCR PAN REC HD AB NO.8X13 S/JU	392893	392893	392893	392893
20	LOCKWASHER M4 S/-	997980	997980	997980	997980
21	WASHER SPRING M10	467272	467272	467272	467272
22	NUT M10 S/JU	991340	991340	991340	991340
23	HOSE OUTLET	455425	455425	455425	455425
23A	HOSE OUTLET FLEXIBLE (ALT)	496510	496510	496510	496510
24	PUMP DRAIN C/W MOTOR	452679	452679	452679	452679
25	CLAMP,31MM	455437	455437	455437	455437
26	CLAMP 37MM	992837	992837	992837	992837
27	HOSE-PRESSURE SWITCH	989177	989177	989177	989177
29	CLAMP,PRESSURE SW.HOSE/FILTER	994263	994263	994263	994263
30	SCR HEX HD M5X16 S/JU	990736	990736	990736	990736
31	HOSE,FILTER/PUMP	455645	455645	455645	455645
32	LOCKWASHER M5	991560	991560	991560	991560
33	FILTER HOUSING	391916	391916	391916	391916
34	LOCKWASHER M10 S/-	393108	393108	393108	393108

WASHERS USE HL/CD8 21/4/87

IT	DESCRIPTION	7003	7003/1	7133	7133/1
35	BOLT HEX HD M10X45 S/JU	989476	989476	989476	989476
36	SCR PAN REC HD AB NO.8X13 S/JU	392893	392893	392893	392893
37	GASKET,FILTER	993013	993013	993013	993013
38	FILTER	391928	391928	391928	391928
39	COVER,FILTER	391930	391930	391930	391930
40	SPRING,FILTER DOOR	455669	455669	455669	455669
41	PIN,HINGE FILTER DOOR	455671	455671	455671	455671
42	DOOR,FILTER	455657	455657	455657	455657
43	PAD,RUBBER	993180	993180	993180	993180
44	FOOT ADJUSTABLE. ASSY	391605	391605	391605	391605
44A	LEVELLING SCR,FOOT ADJUST.	993972	993972	993972	993972
45	NUT CAPTIVE LEVELLING FEET	561664	561664	561664	561664
	NUT,HALF M10 S/JU	999196	999196	999196	999196
46	SWITCH,DOOR TEXAS	417928	417928	417928	417928
47	COVER-TERMINAL BLOCK	455877	455877	455877	455877
48	PLATE,DOOR LATCH	391356	391356	391356	391356
50	DOOR ASSY.C/W GLASS,LINER & RING	456522	456522	456522	456522
51	HANDLE-DOOR	465236	465236	465236	465236
52	CLIP DIAPHRAGM DOOR FRONT	534570	534570	534570	534570
53	SCR PAN REC HD AB	392879	392879	392879	392879
54	HINGE ASSY,ROUND PORT HOLE	483991	483991	483991	483991
55	CLAMP,37MM	992837	992837	992837	992837
56	SCR HEX HD M5X12 S/JU	392934	392934	392934	392934
57	HOOK, DOOR LOCKING	467284	467284	467284	467284
64	SPRING	424555	424555	424555	424555
64A	SPRING-LATCH INTERCHANGEABLE (JUNE)	541470	541470	541470	541470
64B	PLATE SPRING SUPPORT	577699	577699	577699	577699
65	SCR M3X6,DOOR SPRING	392922	392922	392922	392922
66	SCR PAN REC HD M3X10 S/JU	403800	403800	403800	403800
67	MODULE ELECTRONIC CONTROL	487260	487260	487014	487014
67A	MODULE ELECTRONIC CONTROL (FREQ)	-	550794	-	550782
68	HOOK, DOOR LOCKING	467284	467284	467284	467284
69	PIN,LOCKING HOOK	991053	991053	991053	991053
70	LOCKWASHER M8 S/-	392996	392996	392996	392996
71	NUT,HALF M8 S/JU	392958	392958	392958	392958
72	R.F.I.FILTER	433843	433843	433843	433843
73	SCR.PAN REC HD AB NO.9X13 S/JU	363385	363385	363385	363385
74	SHOCK ABSORBER LH SHORT	455528	455528	455528	455528
75	BUSHING, SPRING	455566	455566	455566	455566
76	SCR.3.5X12.5	470621	470621	470621	470621
77	LOCKWASHER 3.8X7X0.6	409505	409505	409505	409505
88	SCR M4X25	341545	341545	341545	341545
89	LOCKWASHER M4 S/-	997980	997980	997980	997980
90	WASHER SPRING M4 S/- TEN PK	990205	990205	990205	990205
91	WASHER M4 B/-	357520	357520	357520	357520
92	NUT,HALF M4 B/-	993817	993817	993817	993817
93	CASE,OUTER	491883	491883	491883	491883
94	BLOCK,MODULE FIXING	487349	487349	487349	487349
95	CLIP, SELF ADHESIVE	393017	393017	393017	393017

CYLINDER AND TUB GROUP

Ref HL/CT8



WASHERS USE HL/CT8 21/4/87

IT	DESCRIPTION	7003	7003/1	7133	7133/1
---	-----	-----	-----	-----	-----
	CYLINDER & TUB GROUP				

*	CLAMP, HOSE 59MM (DELETED 9/84)	455633	455633	455633	455633
	FASTIN HOUSING	997007	997007	997007	997007
	FASTIN RECEPTACLE	997019	997019	997019	997019
	NUT,SQUARE M10 S/JU (9/84)	991168	991168	991168	991168
	PANEL SMALL, POLYSTYRENE	-	546444	-	546444
	PACKING UNDER 2 BRKT TOP WEIGHT				
	PLUG,TUB RUBBER	991493	991493	991493	991493
	WASHER,SPCL 12MM SQ.HOLE	991766	991766	991766	991766
		357441	357441	357441	357441
01	DIAPHRAGM DOOR (9/84) WITH LIP	531671	531671	531671	531671
	DIAPHRAGM DOOR WITH LIP EDPM	546432	546432	546432	546432
	RING DOOR DIAPHRAGM, PLASTIC	577675	577675	577675	577675
02	CLAMP,DIAPHRAGM/TUB SPLIT PIN	455700	455700	455700	455700
02A	CLAMP DIAPHRAGM (9/84)	531645	531645	531645	531645
03	NUT,SELFLOCKING M8X13 S/JU	465365	465365	465365	465365
04	WASHER, LARGE M8	991261	991261	991261	991261
04A	WASHER 8.4 X 30 X 3 (9/84)	516578	516578	516578	516578
05	WASHER M12 CHROME ON NICKEL	467313	467313	467313	467313
05A	WASHER, FIBRE 10.5X30X2	491948	491948	491948	491948
06	STUD M10X60 S/JU	413958	413958	413958	413958
09	STUD	546420	546420	546420	546420
10	TUB ASSY	455542	455542	455542	455542
	TUB ASSY 3 BRKT S/S (JAN 86) ETL097	553837	553837	553837	553837
11	CYLINDER ASSY	487038	487038	487038	487038
12	WASHER,SPCL N/-	469165	469165	469165	469165
13	SCR SHOULDER M4X21X5 B/-	486723	486723	486723	486723
13A	SCREW CENTRE TACHO FREQ	-	567096	-	567096
14	NUT M6 S/JU	990657	990657	990657	990657
15	SPACER,CLAMP RING 6MM SCR	391681	391681	391681	391681
15A	SPACER,CLAMP RING 8MM SCR	515990	515990	515990	515990
16	LOCKWASHER M6 S/JU	421670	421670	421670	421670
17	SCR HEX HD M6X60 HT	445030	445030	445030	445030
18	CLAMP RING	997760	997760	997760	997760
19	GASKET, TUB BACK	997758	997758	997758	997758
20	PLUG,SEALING (9/84)	455607	455607	455607	455607
21	CYLINDER CROSS BEARING ASSY	487272	487272	487272	487272
22	LOCKWASHER	465432	465432	465432	465432
24	SEAL-BALL BEARING	989335	989335	989335	989335
25	BALL RACE	991273	991273	991273	991273
26	BELT,DRIVE 3L535	487301	487301	455578	487301
27	PULLEY DRIVEN	991259	487026	991259	487026
28	THERMOSTAT 40	465250	465250	465250	465250
28A	THERMOSTAT VARIABLE	465420	465420	465420	465420
29	NUT,SELFLOCKING M12 S/JU	395924	395924	395924	395924
30	WASHER, M12 SPCL THICK	990841	990841	990841	990841
31	MOTOR ASSY	487284	487284	516281	516281
32	BALL RACE	989347	989347	989347	989347
35	WASHER,FIBRE 10.5X30	994055	994055	994055	994055
36	GASKET,THERMOSTAT	993051	993051	993051	993051
37	PULLEY MOTOR	487296	-	460092	-
38	SCR SET SQ.HD CUPPT M6X15 S/-	991314	991314	991314	991314
38A	PIN,PULLEY FIXING	460377	460377	460377	460377
39	SCR HEX HD M8X20 S/JU	991455	991455	991455	991455

WASHERS USE HL/CT8 21/4/87

IT	DESCRIPTION	7003	7003/1	7133	7133/1
---	-----	-----	-----	-----	-----
	SCR SPECIAL TE M8X18(MOTOR MTNG)	535926	535926	535926	535926
39A	LOCKWASHER M8 S/JU	421838	421838	421838	421838
39B	WASHER M8 S/JU	421541	421541	421541	421541
40	SUPPORT,MOTOR,RH	490140	490140	395948	395948
41	SUPPORT,MOTOR,LH	395950	490152	395950	395950
43	HEATER 240V 2500W	395273	465406	395273	465406
44	SPACER	566779	566779	566779	566779
45	HOSE TUB/FILTER CLAMP TYPE	455621	455621	455621	455621
45A	HOSE TUB-TO-FILTER WITH BAFFLE	579037	579037	579037	579037
46	CLAMP,HOSE TUB/FILTER	991417	991417	991417	991417
47	COUNTERWEIGHT FRONT, CIRCULAR	455592	455592	455592	455592
47A	COUNTERWEIGHT FRONT(9/84)SEMI-CIRC.	531621	531621	531621	531621
48	STUD M10X45 S/JU	413946	413946	413946	413946
49	SCR PAN REC HD AB NO.4X9 S/JU	395522	395522	395522	395522
50	NUT SELF LOCKING M10 S/JU 9/84	991120	-	991120	-
51	WASHER LARGE M10	421917	421917	421917	421917
51A	WASHER 10.5 X 30 X 2 (9/84)	516566	516566	516566	516566
51B	WASHER, TOP 8.4 X 30 X 3	-	516578	-	516578
52	COUNTERWEIGHT UPPER 3 BRKT	546418	546418	546418	546418
53	TACHO GENERATOR	455853	455853	455853	455853
53A	WASHER SPECIAL	469165	469165	469165	469165
53B	TACHO GENERATOR COMPLETE (FREQ)	-	559714	-	559714